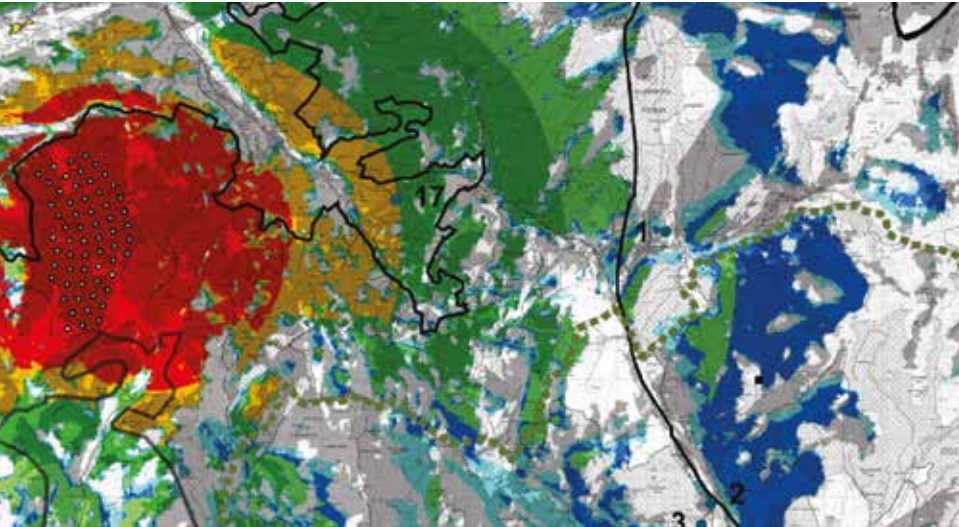


land planning by design



land planning by design

GL Hearn provides a unique fusion of strategic planning insight, environmental sensitivity and sustainable design innovation, creating memorable places in which people want to invest, live, work and play.

Disciplines/Services

- Masterplanning
- Landscape Architecture
- Urban Design
- Acoustics & Noise
- Air Quality
- Quantity Surveying
- Principal Designer
- Project Manager
- Expert Witness

Geographical Locations

The National Land Planning team operates from the following locations in the UK:

- London – Gresham Street and East Grinstead
- Midland Engine – Birmingham Central
- Northern Powerhouse – Manchester, Blackburn, Colwyn Bay and Salford
- Aspire Project Office – Aldershot

We are delighted to be working with:

- Capita's Real Estate and Infrastructure consultancy business
- Capita Group
- Public Sector Organisations
- Private Sector Clients
- Aspire Defence Capital Works

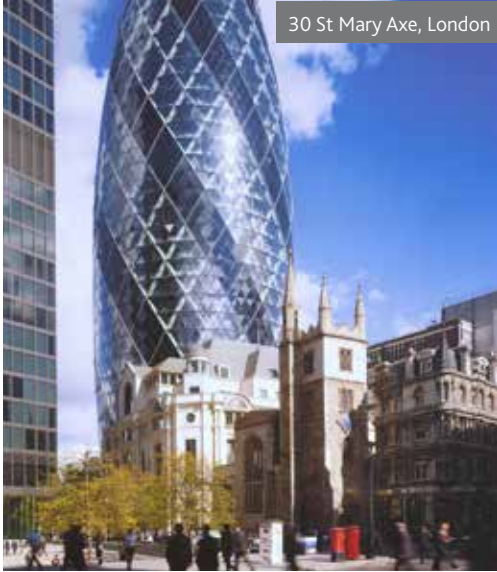
The team utilises its combined project credentials, staff resources and diverse commercial operations to provide a broad service with a UK wide footprint. It continues to build on the reputation of its individual components, including the Lovejoy legacy, Urban Vision, the Blackburn Landscape team, and the Air Quality and Acoustics & Noise teams, building on a successful track record that spans 50 years.

landscape architecture and urban design

OUR SECTORS AND SERVICES

Commercial Property
Housing & Residential
Transport Infrastructure
Hotels & Leisure
Healthcare
Education
Defence
Public Realm
Regeneration
Parks & Heritage
Green Infrastructure





30 St Mary Axe, London



Cardinal Place, London



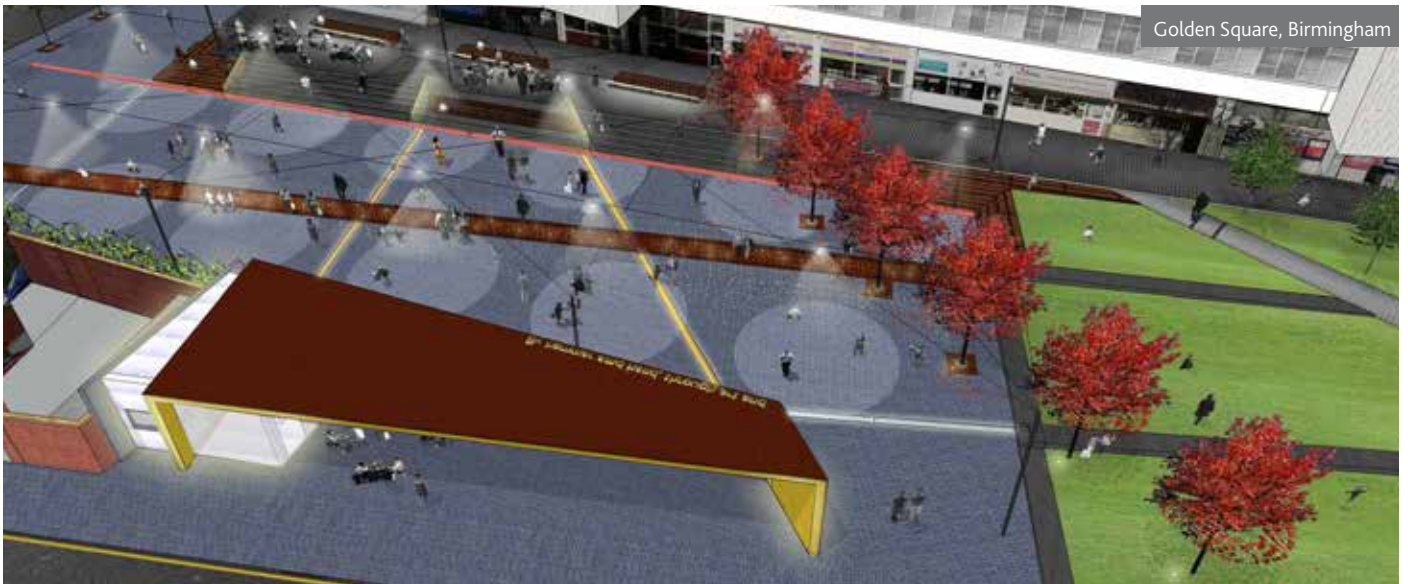
Euro Disney, Paris



Blaenau Ffestiniog, Wales



Aldershot Urban Extension, Hampshire



Golden Square, Birmingham

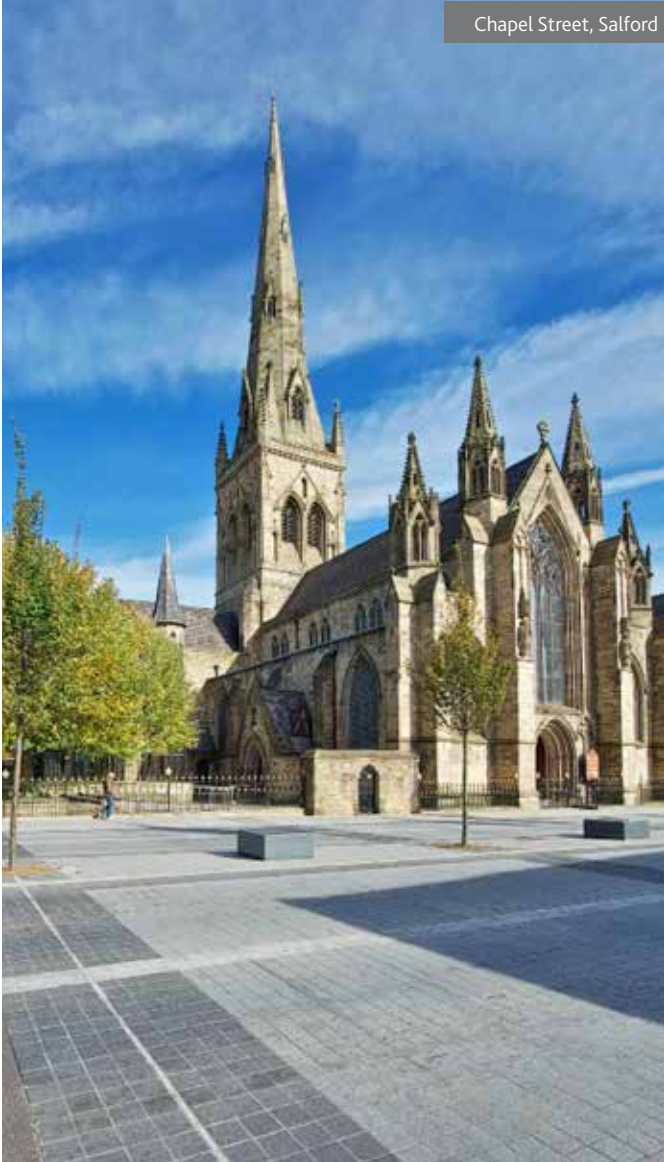


New Covent Garden Market, London



Swansea City Centre, Wales

Chapel Street, Salford



Home Office, London



Seething Lane Gardens, London



acoustics noise

OUR SERVICES AND SECTORS

Noise & Vibration Assessments
Architectural acoustics
Planning & EIA
Building services noise
PA/VA acoustic modelling
Surveys, Monitoring & Testing
Infrastructure assessments



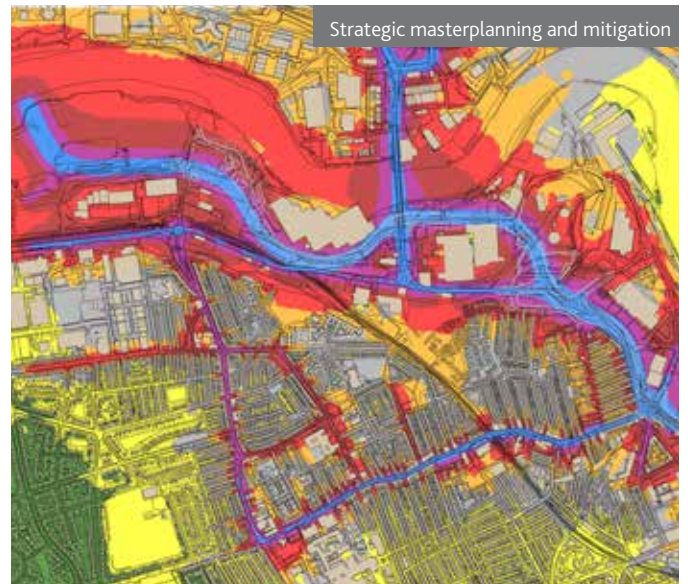
Infrastructure noise and vibration assessments

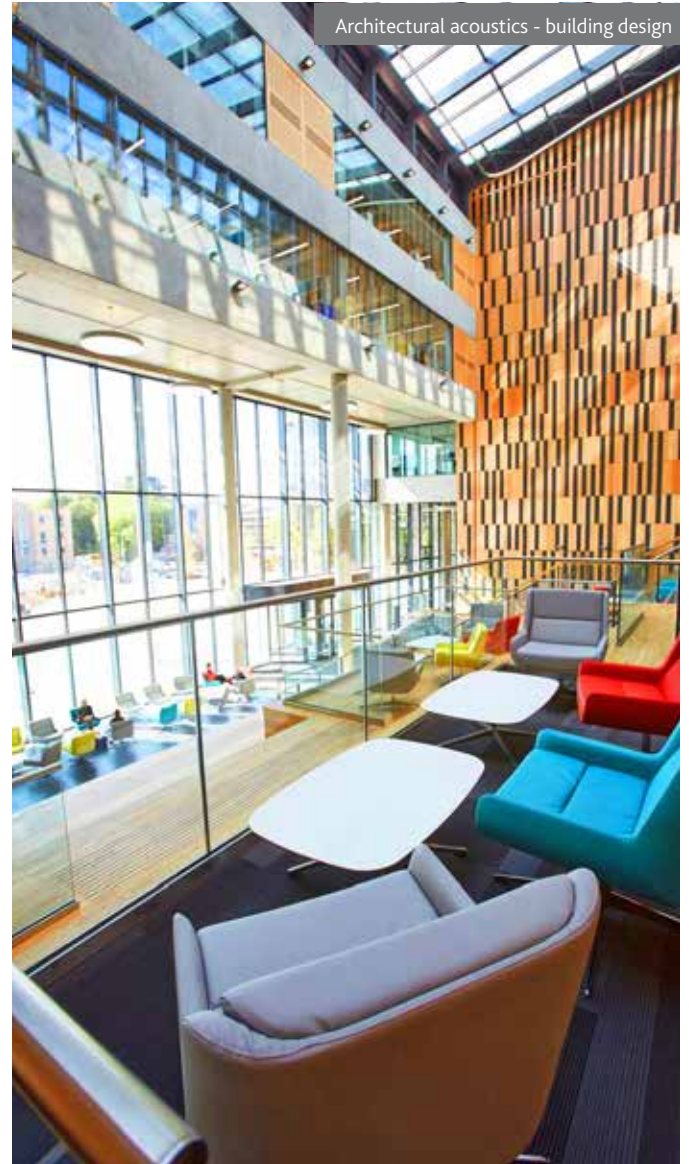
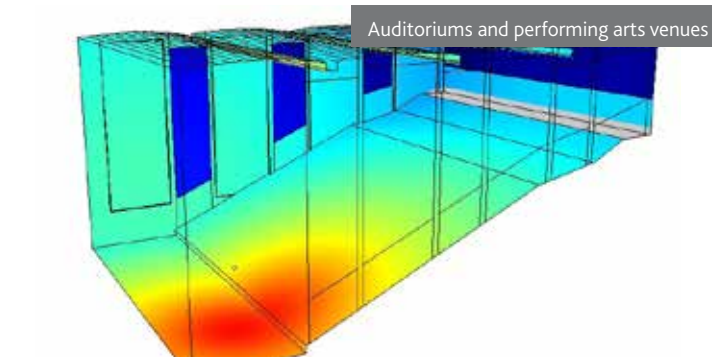


Major transport infrastructure



Strategic masterplanning and mitigation





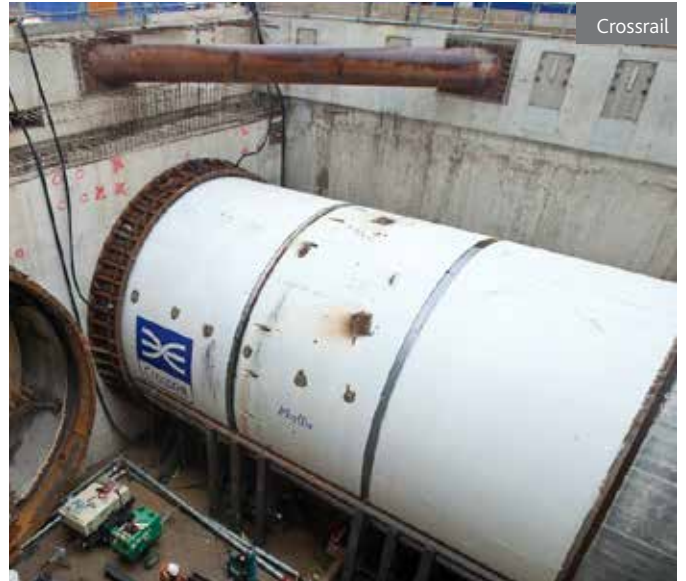


air quality odour carbon

OUR SERVICES AND SECTORS

- Climate Change
- Odour
- Carbon Emission
- Transport
- Energy & Waste
- Development
- Construction



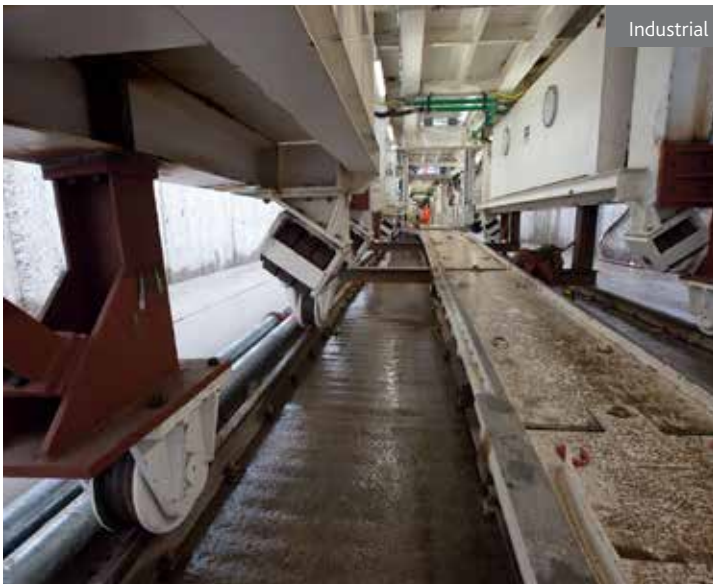




Air Pollution



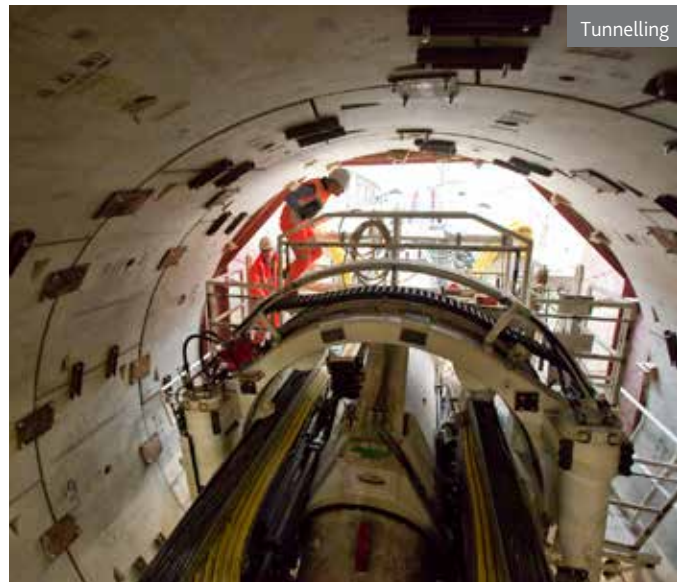
Construction



Industrial



Cardiff Bay



ecology biodiversity

OUR SECTORS AND SERVICES

- Transport Infrastructure
- Housing
- Defence
- Utilities
- Commerical Property
- Protected Species Survey
- Invasive Species Advice
- Habitat Creation
- Ecological Assessment & Design
- Arboriculture



Riverside Surveys



Stag Beetle Surveys



Invasive Species Surveys



Bat Surveys





Arboriculture



Great Crested Newts Surveys



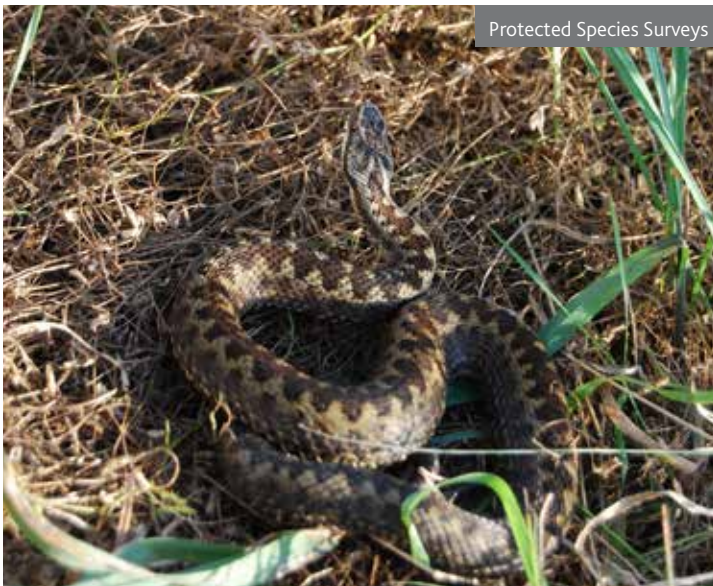
Railway Line Management



Insect Surveys



Ecological Engineering



Protected Species Surveys



Green & Brown Roof Design & Advice



Biodiversity Masterplanning



Wetland Management

The Trees and Design Action Group (TDAG) is a world first.

About TDAG

The Trees and Design Action Group (TDAG) is an open collaborative forum facilitating cross-sector and cross-disciplinary dialogue and projects promoting the role of the urban forest throughout the United Kingdom.

The group shares the collective vision that the location of trees, and all the benefits they bring, can be secured for future generations through better collaboration in the planning, design, construction and management of our urban infrastructure and spaces.

Established in 2007 as a not-for-profit and apolitical collaborative forum, TDAG incorporated as a charitable trust in 2013. Its membership, online publications and information are free. This approach enables TDAG to assimilate ideas and knowledge independently of organisational hierarchy, profit or commercial interests.

What we do

We provide a forum for cross-sector working

TDAG meets regularly in several locations which, to date, include London, Birmingham and Exeter. It is understood that all members cannot attend every meeting, but all are kept fully informed through meeting notes. The focus of each meeting is driven by the membership. For details of upcoming meetings in London, the Midlands and the Southwest do not hesitate to contact the local TDAG coordinators.

We produce best practice guides

TDAG uses its membership's broad expertise and experience to develop guides offering evidence-based information, practical advice and case studies to inform decision-making on urban trees.

We respond to consultations

TDAG responds to policy consultation on policy documents as well as best practice standards and guidance that can have an impact on the urban forest. All members are invited to contribute, allowing a holistic and balanced response. All TDAG consultation responses can be found under Other downloads.

We facilitate knowledge and research dissemination

TDAG helps identify and promote available reports and research that can inform better decision making on urban trees. It also seeks to identify knowledge gaps and how they can be addressed. For more details visit our Research page.



The TDAG guides won the 2016 Landscape Institute Award for Policy & Research.

The award judges said:
"The guides encourage a collaborative approach across the planning, design and engineering professions"



team locations

